

TRIPLE-SPECTRUM LED FIBER OPTIC ILLUMINATOR

SLG-450TSL

Ultra-high Intensity LED mixed fiber optic illuminator with
over 10 million lux* equipped with 3 LEDs of red, green and blue
(Equipped with high-speed pulse function and high-speed dimming function)

*It is a conversion value based on the actual measurement value in our measurement method.



■ FEATURES | SLG-450TSL

- Unique wavelength characteristics mixed with 3 wavelengths
- With the Color Mixing Proportion Lock, it is possible to adjust the light without breaking the color mixture.
- Stationary luminescence, Pulse luminescence
- Achieves stable output over a long period of time with the illuminance feedback function

REVOX.JP

TRIPLE-SPECTRUM LED FIBER OPTIC ILLUMINATOR

SLG-450TSL

Ultra-high Intensity LED mixed fiber optic illuminator with over 10 million lux*
equipped with 3 LEDs of red, green and blue

(Equipped with high-speed pulse function and high-speed dimming function)

*It is a conversion value based on the actual measurement value in our measurement method.

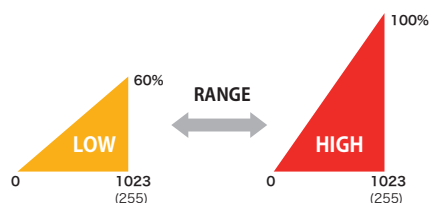


DIMMING RANGE CHANGE |

- By switching the dimming range between LOW mode and HIGH mode, it covers the low illuminance range and the high illuminance range.

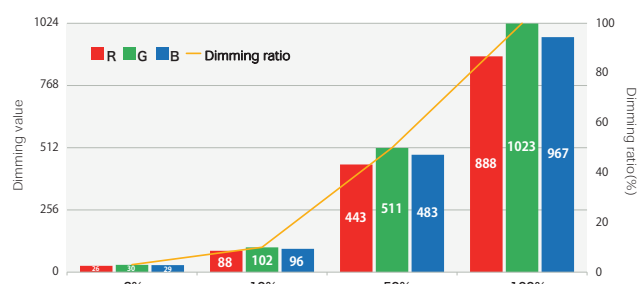
* LOW mode: 60% of the maximum light amount is the maximum dimming value, HIGH mode: 100% of the maximum light amount is the maximum dimming value

* Maximum illuminance varies depending on the combination with the FB function.



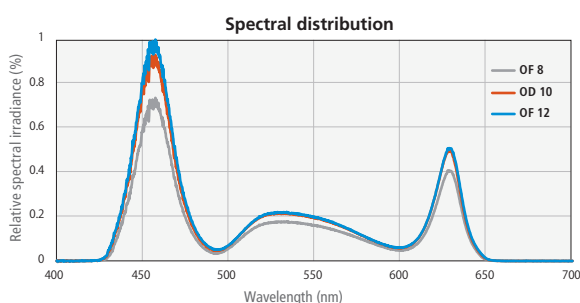
COLOR MIXING PROPORTION LOCK |

- The shades of red, green, and blue can be fixed, and the brightness can be adjusted without destroying the shades.

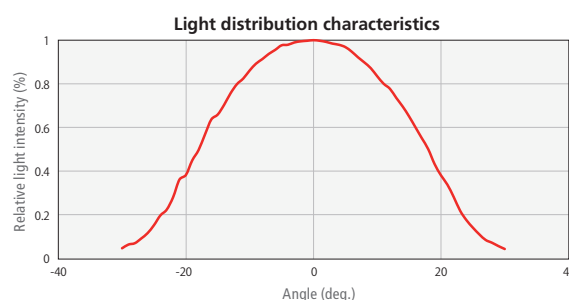


* The graph is an image. (Not a guaranteed value)

SPECTRAL DISTRIBUTION |



LIGHT DISTRIBUTION |



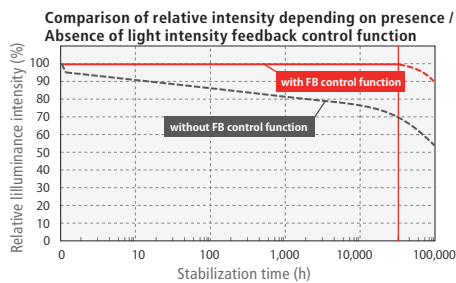
■ RGB INDIVIDUAL CONTROL |

- The brightness of each of red, green, and blue can be controlled with a maximum of 10 bits (1024 steps).
- Can be set to the desired shade

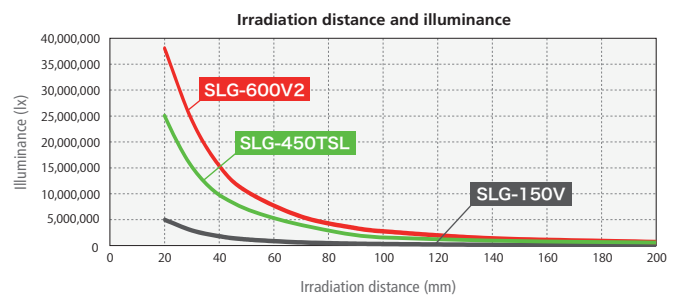


■ FEED BACK SYSTEM |

- By maintaining the light output feedback control function and arbitrary stabilization time, the output is maintained for a long time



■ HIGH INTENSITY | Illuminance comparison data



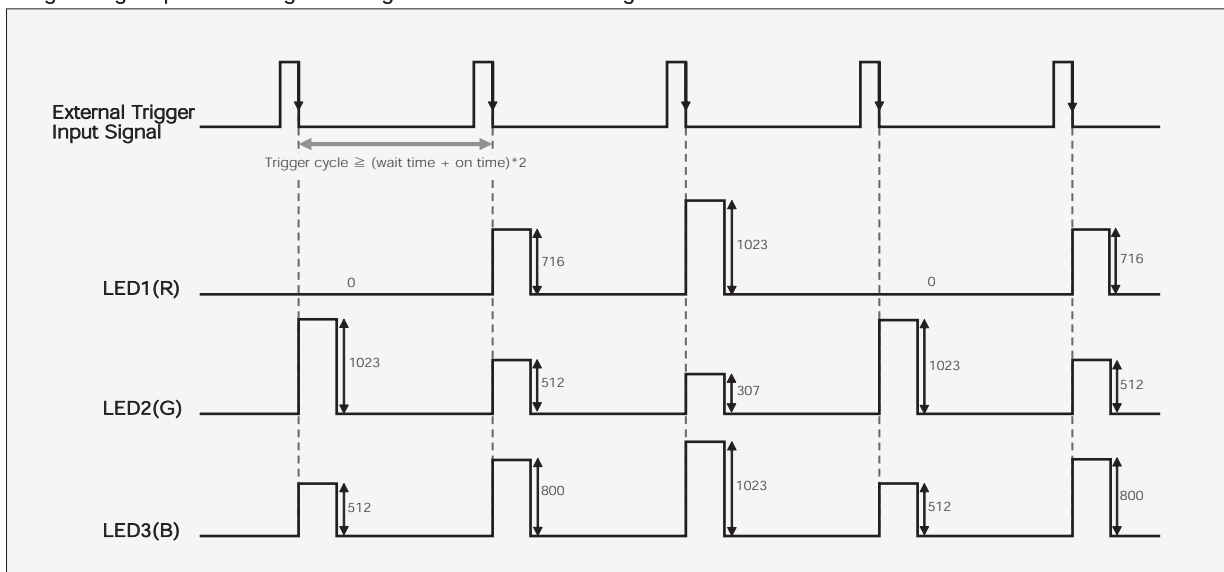
*Measured value at each given distance from the fiber exit face of 1,000 mm long straight light guide (with 8 mm bundle diameter) at maximum illuminance (not guaranteed)

■ HIGH-SPEED DIMMER SYSTEM |

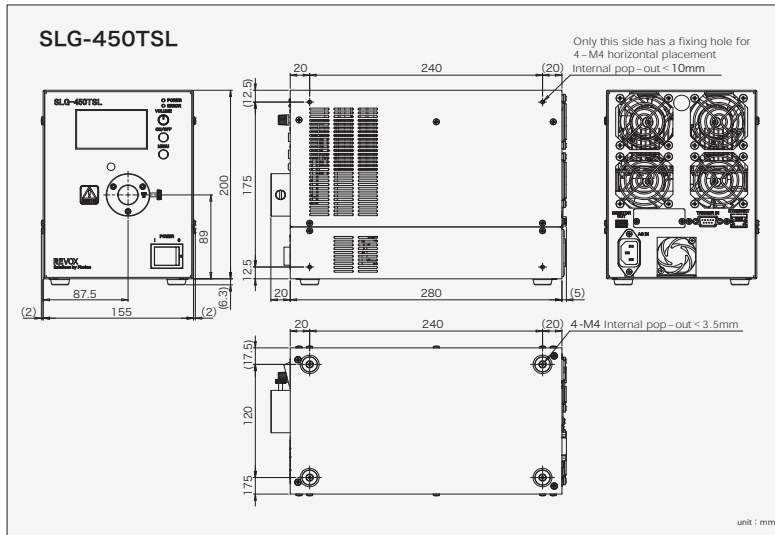
- Continuous and fast switching to arbitrarily set dimming value (R/G/B)
- 8 dimming values can be registered

	bank1	bank2	bank3	bank4	bank5	bank6	bank7	bank8
LED1(R)	0	716	1023	-	-	-	-	-
LED2(G)	1023	512	307	-	-	-	-	-
LED3(B)	512	800	1023	-	-	-	-	-

Image of high-speed dimming according to the above bank settings



APPEARANCE |



MODEL NUMBER |

SLG-450STL-①-②

- ① : Pulse correspondence→none, Stationary→ST
② : Standard→none, Air purge→AP

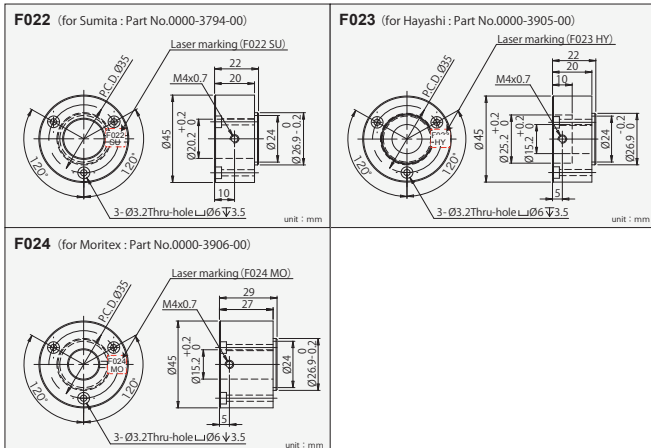
OPTION | Light guide, Adapter for light guide

We suggest a suitable light guide such as straight, ring or line type.



FERRULE ADAPTOR |

Ferrule adaptors to fix a light guide



Note

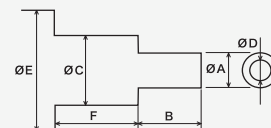
Please carefully read the operation instruction guide prior to use. The above specifications are subject to change without notice. This product emits high-intensity visible light. Because light-absorbing materials convert incident light into heat, heat-sensitive or flammable light-absorbing materials may be damaged. Please check the items in the instruction guide and use it safely.

TECH SPEC |

Model No.	SLG-450TSL	SLG-450TSL-ST
Applicable fiber bundle diameter	Ø8 to 12 mm	
Light distribution angle	36° (full angle)	
LED color	Red : 622nm /Green : 520nm /Blue : 450nm	
Drive method	Constant-current drive	
Light control	Variable-current control	
High-speed strobe/High-speed dimming	Equipped	Not Equipped
Input power supply	100 to 240 VAC (±10%) 50/60 Hz	
Power consumption (typ.) / At maximum light	420VA (AC100V)	435VA (AC240V)
Inrush current (typ.)	T.B.D	
Operating environment (indoor use only)	Temperature: 0 to 40 degree C Humidity: 20 to 80% (no condensation)	
Storage environment	Temperature: -10 to 60 degree C Humidity: 20 to 80% (no condensation)	
Cooling method	Forced cooling with a fan inside	
LED expected lifetime	30,000 hours (Calculated values until the light output decreases to 70%)	
control method	Input: Manual, ETHERNET Output: Light Source Module Temperature Abnormality, Light Source Module Status Detection, Light Intensity Feedback Control Error	
Dimming resolution	8bit: 256 steps, 10bit: 1024 steps	
Dimming range	0 to 100%	
External dimensions (mm)	D280 x W155 x H200 (Excluding protrusions)	
CE marking	Safety standards: Conforms to EN61010-1, EN62311 EMC standards: Conforms to EN61000-6-2, EN61000-6-4 (T.B.D)	
PSE	Conform to Technical Standards (T.B.D)	
Environmental regulations	RoHS compliant (T.B.D)	
Material, coating and surface processing	Aluminium alloy (Alumite), Semi-gloss leather tone	
Weight	Approx. 6.0 kg	
Accessories	One Instruction Guide, 3P 2-m AC power cord 2-flat-blade and a round grounding pin × 1	

OPTION | Custom-order ferrule

- To order customized ferrule, inform us of the dimensions of the light guide. (A to F)



* For sizes not listed, please inquire (info@revox.jp)

Creating the future with light

REVOX, Inc.

Head Office

SIC-3 1880-2 Kamimizo, Chuo-ku,
Sagamihara, Kanagawa, Japan 252-0243 Tel
81. (0)42. 786. 0371
Fax 81. (0)42. 786. 0372
E-mail info@revox.jp

www.revax.jp

www.revax.jp/en (international)



Sales Dept.

AR Shin-Yokohama Bldg. 8F
2-17-19 Shin-Yokohama,
Kouhoku-ku Yokohama,
Kanagawa, Japan 222-0033 Tel
81. (0)45. 548. 8172
Fax 81. (0)45. 548. 8568

국내 파트너 : 엔비전 (ENVISION Co., Ltd.)



(08506) 서울시 금천구 가산디지털2로 98, 1동 603호
sales@envision.co.kr www.envision.co.kr
02-2624-5503

Copyright © 2022 REVOX Inc. All Rights Reserved.
Issued on May 31, 2022

(08506) 1-603, 98, Gasan digital 2-ro, Geumcheon-gu, Seoul, Korea
sales@envision.co.kr www.envision.co.kr

+82-2-2624-5503